

## **Mann Ave between Glanford Rd and Vanalman Ave**

**October 21, 2019 To October 25, 2019**



The data presented here is for information purposes only and should not be considered authoritative for construction, geotechnical, engineering, navigational, legal, or other site-specific uses. The information shared is owned by the Transportation Division of the Engineering Department at the District of Saanich. Accuracy is not guaranteed.

Start Date: 21-Oct-19  
 Start Time: 0:01  
 Station ID: C0044-01

**Location 1: Mann Ave between Glanford Rd and Vanalman Ave**

Note: Inconsistent westbound volume on Oct 22 from 11:30 to 12:00.

DATE:	October 21, 2019		October 22, 2019		October 23, 2019		October 24, 2019		October 25, 2019		WK AVG		WK AVG	HOURLY
	MON		TUE		WED		THURS		FRI				CH 1+2	%
Time:	EB	WB	EB	WB	EB	WB	EB	WB	EB	WB	EB	WB		
12-1 AM			10	6	12	8	14	16			12	10	22	0.5%
1-2 AM			1	3	4	3	3	2			3	3	5	0.1%
2-3 AM			4	1	2	1	4	3			3	2	5	0.1%
3-4 AM			6	1	5	0	2	0			4	0	5	0.1%
4-5 AM			11	5	6	5	9	3			9	4	13	0.3%
5-6 AM			25	15	30	20	21	17			25	17	43	0.9%
6-7 AM			102	62	124	55	124	57			117	58	175	3.6%
7-8 AM			214	121	251	131	217	120			227	124	351	7.2%
8-9 AM			240	146	280	154	292	160			271	153	424	8.7%
9-10 AM			221	134	192	144	179	127			197	135	332	6.9%
10-11 AM			132	147	146	124	129	129			136	133	269	5.5%
11-12 PM			176	323	139	167	127	156			147	215	363	7.5%
12-1 PM			158	149	119	157	136	154			138	153	291	6.0%
1-2 PM			136	147	128	170	133	152			132	156	289	6.0%
2-3 PM			151	149	169	152	122	152			147	151	298	6.1%
3-4 PM			165	168	155	178	142	174			154	173	327	6.7%
4-5 PM			163	221	145	246	167	206			158	224	383	7.9%
5-6 PM			138	200	135	200	149	220			141	207	347	7.2%
6-7 PM			119	190	118	177	108	171			115	179	294	6.1%
7-8 PM			84	130	104	131	84	118			91	126	217	4.5%
8-9 PM			61	68	64	90	103	108			76	89	165	3.4%
9-10 PM			56	63	68	78	46	73			57	71	128	2.6%
10-11 PM			24	36	31	36	45	30			33	34	67	1.4%
11-12 AM			13	21	13	20	19	28			15	23	38	0.8%
<b>LANES</b>			<b>2410</b>	<b>2506</b>	<b>2440</b>	<b>2447</b>	<b>2375</b>	<b>2376</b>			<b>2408</b>	<b>2443</b>	<b>4851</b>	<b>100.0%</b>
<b>TOTAL</b>			<b>4916</b>		<b>4887</b>		<b>4751</b>				<b>4860</b>			
	MON		TUE		WED		THURS		FRI		WK AVG			

PEAK HOUR					TOTAL VEHICALS-PEAK PERIODS		2 HOUR PEAK INTERVALS				
MAX. 7 - 9 am PEAK HOUR	424	⇒	8.7%	between 8-9 AM	2159	⇒	6 HR TOTAL	<b>2 HR AM (7 - 9 AM)</b>			
MAX. 7 - 11 am PEAK HOUR	424	⇒	8.7%	between 8-9 AM	1505	⇒	4 HR TOTAL	VEH / HR	VEH / 2HR	2 HR %	
MAX. 11 am - 1 pm PEAK HOUR	363	⇒	7.5%	between 11-12 PM				7-8 AM	351	775	16.0%
MAX. 11 am - 3 pm PEAK HOUR	363	⇒	7.5%	between 11-12 PM				8-9 AM	424		
MAX. 4 - 6 pm PEAK HOUR	383	⇒	7.9%	between 4-5 PM				<b>2 HR NOON (11 - 1 PM)</b>			
MAX. 3 - 6 pm PEAK HOUR	383	⇒	7.9%	between 4-5 PM				VEH / HR	VEH / 2HR	2 HR %	
								11-12 PM	363	654	13.5%
								12-1 PM	291		
								<b>2 HR PM (4 - 6 PM)</b>			
								VEH / HR	VEH / 2HR	2 HR %	
								4-5 PM	383	730	15.0%
								5-6 PM	347		

**Mann Ave between Glanford Rd and Vanalman Ave**

Westbound

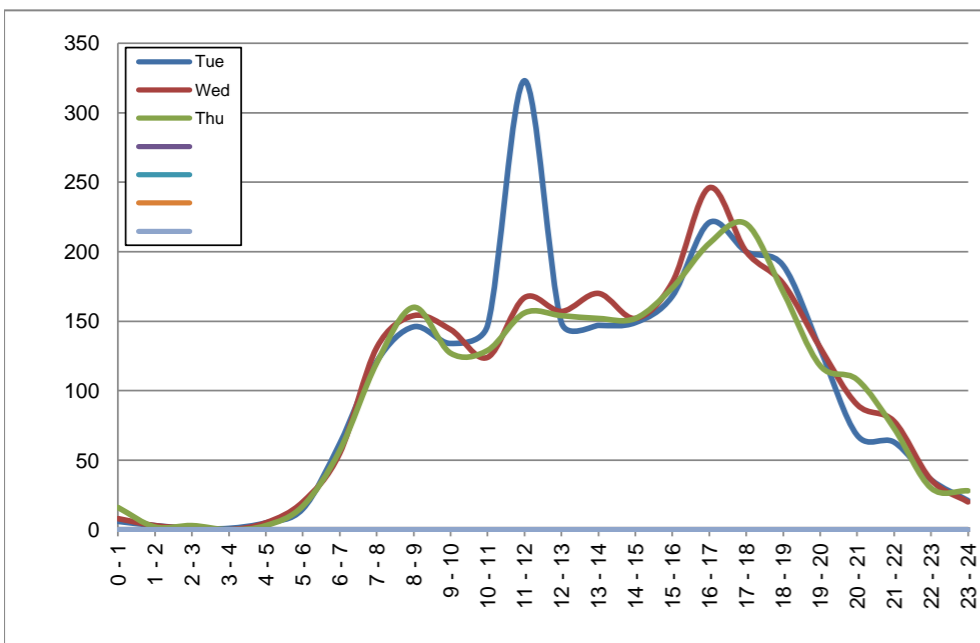
October 22, 2019 to October 24, 2019

**Hourly Volumes**

Time Period	Tue	Wed	Thu				
	Oct 22	Oct 23	Oct 24				
0 - 1	6	8	16				
1 - 2	3	3	2				
2 - 3	1	1	3				
3 - 4	1	0	0				
4 - 5	5	5	3				
5 - 6	15	20	17				
6 - 7	62	55	57				
7 - 8	121	131	120				
8 - 9	146	154	160				
9 - 10	134	144	127				
10 - 11	147	124	129				
11 - 12	323	167	156				
12 - 13	149	157	154				
13 - 14	147	170	152				
14 - 15	149	152	152				
15 - 16	168	178	174				
16 - 17	221	246	206				
17 - 18	200	200	220				
18 - 19	190	177	171				
19 - 20	130	131	118				
20 - 21	68	90	108				
21 - 22	63	78	73				
22 - 23	36	36	30				
23 - 24	21	20	28				
<b>Day Total</b>	<b>2506</b>	<b>2447</b>	<b>2376</b>				

**15-Minute Volumes**

Time Start	Tue	Wed	Thu				
	Oct 22	Oct 23	Oct 24				
0:00	2	3	5				
0:15	3	1	8				
0:30	1	2	3				
0:45	0	2	0				
1:00	0	1	1				
1:15	2	1	0				
1:30	0	0	0				
1:45	1	1	1				
2:00	0	1	1				
2:15	0	0	0				
2:30	0	0	0				
2:45	1	0	2				
3:00	0	0	0				
3:15	0	0	0				
3:30	1	0	0				
3:45	0	0	0				
4:00	1	2	0				
4:15	0	0	1				
4:30	1	1	1				
4:45	3	2	1				
5:00	4	1	2				
5:15	1	2	1				
5:30	4	7	5				
5:45	6	10	9				
6:00	8	10	9				
6:15	10	15	13				
6:30	22	19	18				
6:45	22	11	17				
7:00	25	29	24				
7:15	31	33	24				
7:30	31	29	30				
7:45	34	40	42				
8:00	32	38	34				
8:15	42	35	45				
8:30	42	47	48				
8:45	30	34	33				
9:00	37	31	29				
9:15	23	42	27				
9:30	39	34	42				
9:45	35	37	29				
10:00	30	33	44				
10:15	42	34	32				
10:30	43	22	30				
10:45	32	35	23				
11:00	42	55	29				
11:15	45	43	46				
11:30	123	34	39				
11:45	113	35	42				
12:00	48	31	40				
12:15	35	48	29				
12:30	33	35	40				
12:45	33	43	45				
13:00	41	50	43				
13:15	34	39	37				
13:30	35	37	43				
13:45	37	44	29				
14:00	38	36	45				
14:15	39	38	44				
14:30	29	37	38				
14:45	43	41	25				
15:00	46	46	43				
15:15	43	45	45				
15:30	30	44	42				
15:45	49	43	44				
16:00	52	54	43				
16:15	51	63	49				
16:30	63	57	59				
16:45	55	72	55				
17:00	53	54	57				
17:15	47	56	58				
17:30	57	47	56				
17:45	43	43	49				
18:00	50	49	47				
18:15	47	50	42				
18:30	49	47	38				
18:45	44	31	44				
19:00	38	38	38				
19:15	29	44	26				
19:30	34	23	24				
19:45	29	26	30				
20:00	17	21	25				
20:15	16	23	30				
20:30	15	26	25				
20:45	20	20	28				
21:00	17	28	18				
21:15	17	22	22				
21:30	18	20	18				
21:45	11	8	15				
22:00	15	9	13				
22:15	8	16	7				
22:30	6	10	5				
22:45	7	1	5				
23:00	9	6	13				
23:15	3	5	6				
23:30	5	6	5				
23:45	4	3	4				



Site notes:

**Mann Ave between Glanford Rd and Vanalman Ave**

Eastbound

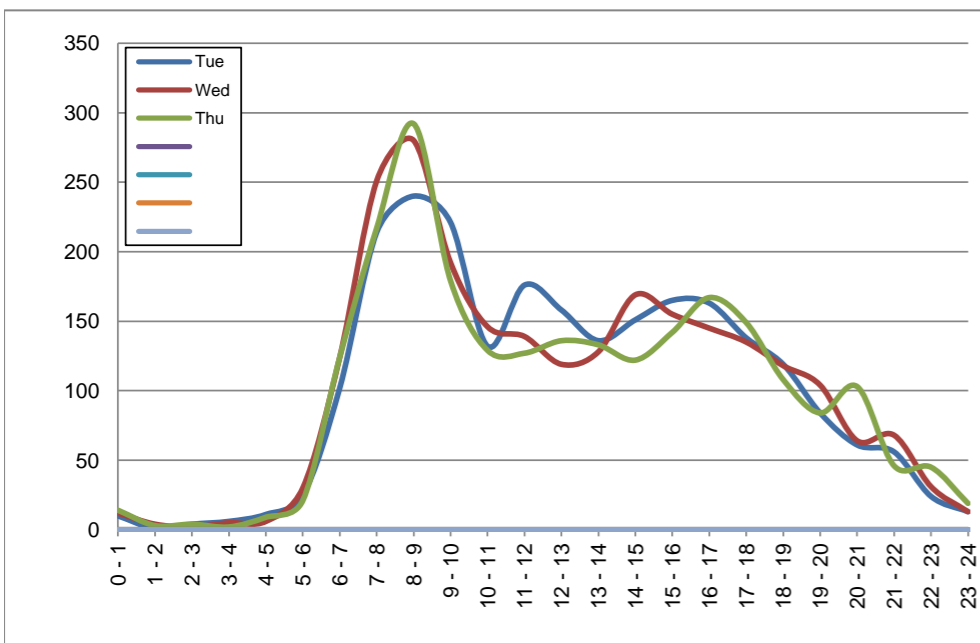
October 22, 2019 to October 24, 2019

**Hourly Volumes**

Time Period	Tue	Wed	Thu			
	Oct 22	Oct 23	Oct 24			
0 - 1	10	12	14			
1 - 2	1	4	3			
2 - 3	4	2	4			
3 - 4	6	5	2			
4 - 5	11	6	9			
5 - 6	25	30	21			
6 - 7	102	124	124			
7 - 8	214	251	217			
8 - 9	240	280	292			
9 - 10	221	192	179			
10 - 11	132	146	129			
11 - 12	176	139	127			
12 - 13	158	119	136			
13 - 14	136	128	133			
14 - 15	151	169	122			
15 - 16	165	155	142			
16 - 17	163	145	167			
17 - 18	138	135	149			
18 - 19	119	118	108			
19 - 20	84	104	84			
20 - 21	61	64	103			
21 - 22	56	68	46			
22 - 23	24	31	45			
23 - 24	13	13	19			
<b>Day Total</b>	<b>2410</b>	<b>2440</b>	<b>2375</b>			

**15-Minute Volumes**

Time Start	Tue	Wed	Thu				Time Start	Tue	Wed	Thu			
	Oct 22	Oct 23	Oct 24					Oct 22	Oct 23	Oct 24			
0:00	6	3	5				12:00	45	29	30			
0:15	1	4	5				12:15	35	31	38			
0:30	1	3	4				12:30	44	28	36			
0:45	2	2	0				12:45	34	31	32			
1:00	0	3	2				13:00	45	34	28			
1:15	1	0	1				13:15	27	38	26			
1:30	0	0	0				13:30	37	28	46			
1:45	0	1	0				13:45	27	28	33			
2:00	1	1	2				14:00	34	41	25			
2:15	2	0	0				14:15	35	41	27			
2:30	0	1	1				14:30	43	43	37			
2:45	1	0	1				14:45	39	44	33			
3:00	1	0	0				15:00	38	39	36			
3:15	1	1	1				15:15	40	36	38			
3:30	2	3	0				15:30	44	41	29			
3:45	2	1	1				15:45	43	39	39			
4:00	2	2	0				16:00	39	41	43			
4:15	2	0	1				16:15	42	41	40			
4:30	2	0	1				16:30	36	29	44			
4:45	5	4	7				16:45	46	34	40			
5:00	2	4	3				17:00	42	38	33			
5:15	2	5	2				17:15	30	42	43			
5:30	10	9	8				17:30	27	24	31			
5:45	11	12	8				17:45	39	31	42			
6:00	17	16	19				18:00	36	27	33			
6:15	17	25	24				18:15	31	25	33			
6:30	28	36	37				18:30	29	34	21			
6:45	40	47	44				18:45	23	32	21			
7:00	53	52	46				19:00	22	37	17			
7:15	51	60	53				19:15	20	29	15			
7:30	47	61	58				19:30	22	19	16			
7:45	63	78	60				19:45	20	19	36			
8:00	57	74	71				20:00	19	20	26			
8:15	57	70	65				20:15	12	11	32			
8:30	66	64	85				20:30	15	12	18			
8:45	60	72	71				20:45	15	21	27			
9:00	63	55	61				21:00	18	19	13			
9:15	57	49	43				21:15	9	13	16			
9:30	52	55	33				21:30	11	23	9			
9:45	49	33	42				21:45	18	13	8			
10:00	29	33	38				22:00	11	6	11			
10:15	32	28	31				22:15	6	8	16			
10:30	33	43	22				22:30	1	10	12			
10:45	38	42	38				22:45	6	7	6			
11:00	30	45	36				23:00	5	3	3			
11:15	35	29	32				23:15	4	4	4			
11:30	52	29	27				23:30	2	1	9			
11:45	59	36	32				23:45	2	5	3			



Site notes:

# Vehicle Speed Summary

Saanich Engineering Department

Count Id: [C0044-01](#)

Filename: [Mann Ave between Glanford Rd and Vanalman Ave-Oct-2019.xlsm](#)

**Location:** Mann Ave between Glanford Rd and Vanalman Ave

Note: Inconsistent westbound volume on Oct 22 from 11:30 to 12:00.

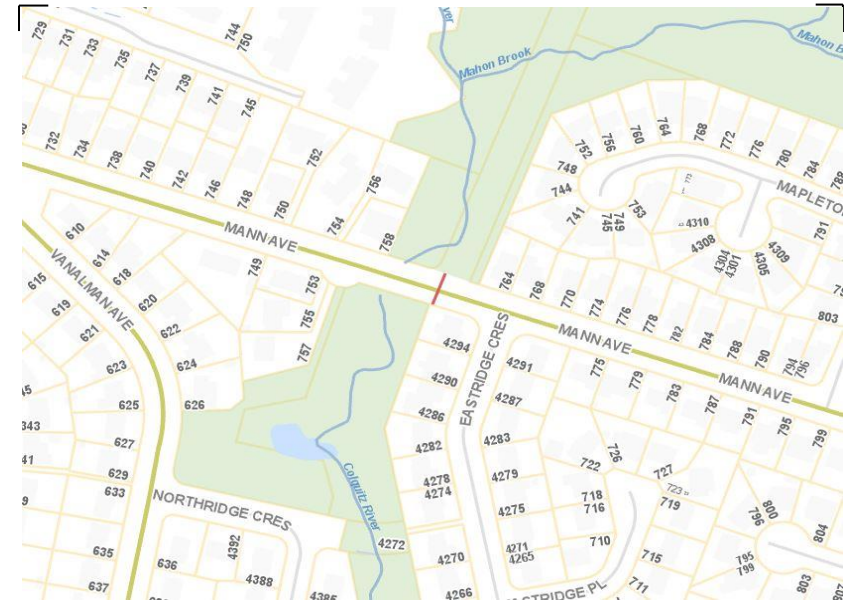
Direction: **East-West**

Dates: **October 21, 2019 To October 25, 2019**

*Filtered data*

AVG. SPEED	<b>33</b> mph	<b>53</b> km/h
50 % SPEED	<b>34</b> mph	<b>54</b> km/h
85 % SPEED	<b>38</b> mph	<b>61</b> km/h
95 % SPEED	<b>41</b> mph	<b>66</b> km/h

Location Map



**Mann Ave between Glanford Rd and Vanalman Ave**

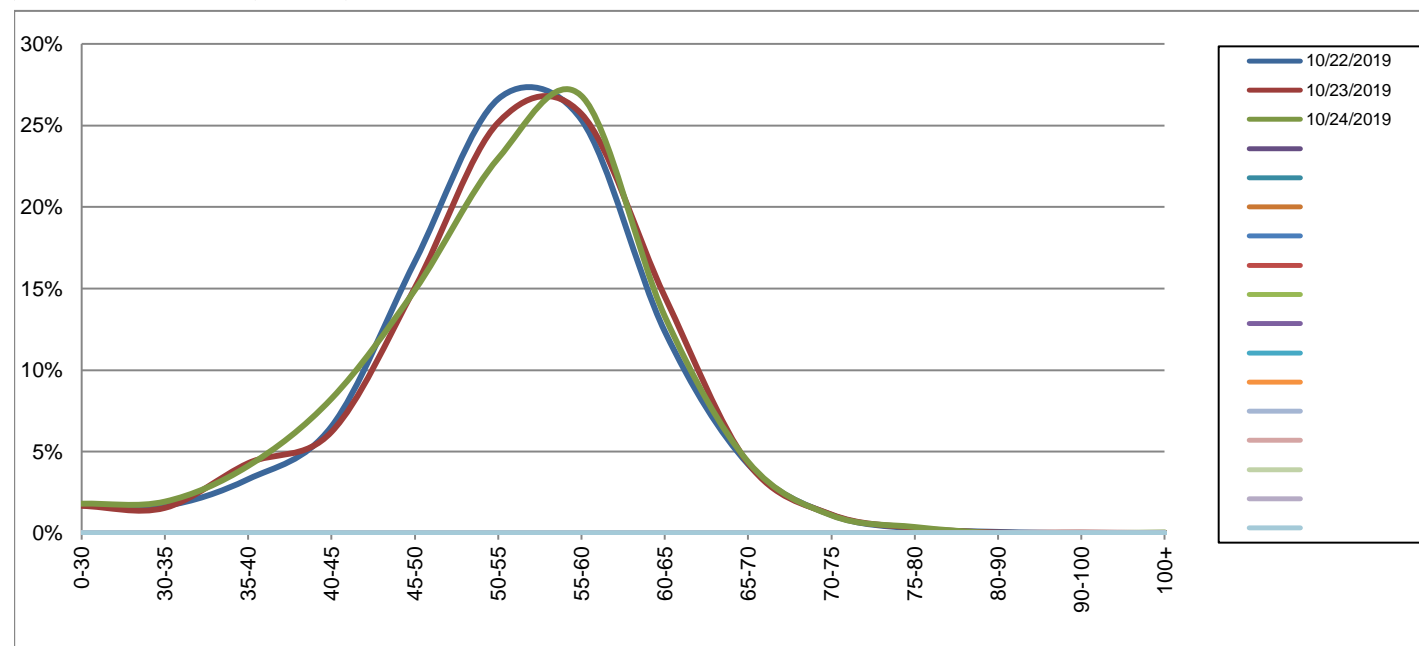
Westbound

October 22, 2019 to October 24, 2019

Daily Speed Bin Percentages															Daily Speed Bin Volumes														Total	Avg.
Bin #	1	2	3	4	5	6	7	8	9	10	11	12	13	14	1	2	3	4	5	6	7	8	9	10	11	12	13	14	Volume	Speed
Bin Speeds	0-30	30-35	35-40	40-45	45-50	50-55	55-60	60-65	65-70	70-75	75-80	80-90	90-100	100+	0-30	30-35	35-40	40-45	45-50	50-55	55-60	60-65	65-70	70-75	75-80	80-90	90-100	100+		
10/22/2019	1.8%	1.7%	3.3%	6.5%	16.6%	26.6%	25.3%	12.4%	4.2%	1.1%	0.3%	0.1%	0.0%	0.0%	45	42	83	164	417	667	635	310	106	28	7	2	0	0	2506	53
10/23/2019	1.7%	1.6%	4.3%	6.2%	15.0%	25.2%	25.7%	14.5%	4.3%	1.1%	0.3%	0.0%	0.0%	0.0%	41	38	105	152	368	616	629	355	105	28	8	1	1	0	2447	53
10/24/2019	1.8%	1.9%	4.1%	8.2%	14.9%	23.0%	26.8%	13.3%	4.4%	1.1%	0.4%	0.0%	0.0%	0.0%	43	46	98	196	354	546	637	316	104	26	9	0	0	1	2376	53
<b>Total</b>	1.8%	1.7%	3.9%	7.0%	15.5%	25.0%	25.9%	13.4%	4.3%	1.1%	0.3%	0.0%	0.0%	0.0%	129	126	286	512	1139	1829	1901	981	315	82	24	3	1	1	7329	53

**Speed Data Summary**

Bin #	1	2	3	4	5	6	7	8	9	10	11	12	13	14	Total
Bin Speeds	0-30	30-35	35-40	40-45	45-50	50-55	55-60	60-65	65-70	70-75	75-80	80-90	90-100	100+	
Survey Total	129	126	286	512	1139	1829	1901	981	315	82	24	3	1	1	7329
% Total	1.8%	1.7%	3.9%	7.0%	15.5%	25.0%	25.9%	13.4%	4.3%	1.1%	0.3%	0.0%	0.0%	0.0%	100%
Accumulated %	1.8%	3.5%	7.4%	14.4%	29.9%	54.9%	80.8%	94.2%	98.5%	99.6%	99.9%	100.0%	100.0%	100%	
Inverse Accum. %	98.2%	96.5%	92.6%	85.6%	70.1%	45.1%	19.2%	5.8%	1.5%	0.4%	0.1%	0.0%	0.0%	0.0%	
Average Speed	53 KM/H														



Site notes:

**Mann Ave between Glanford Rd and Vanalman Ave**

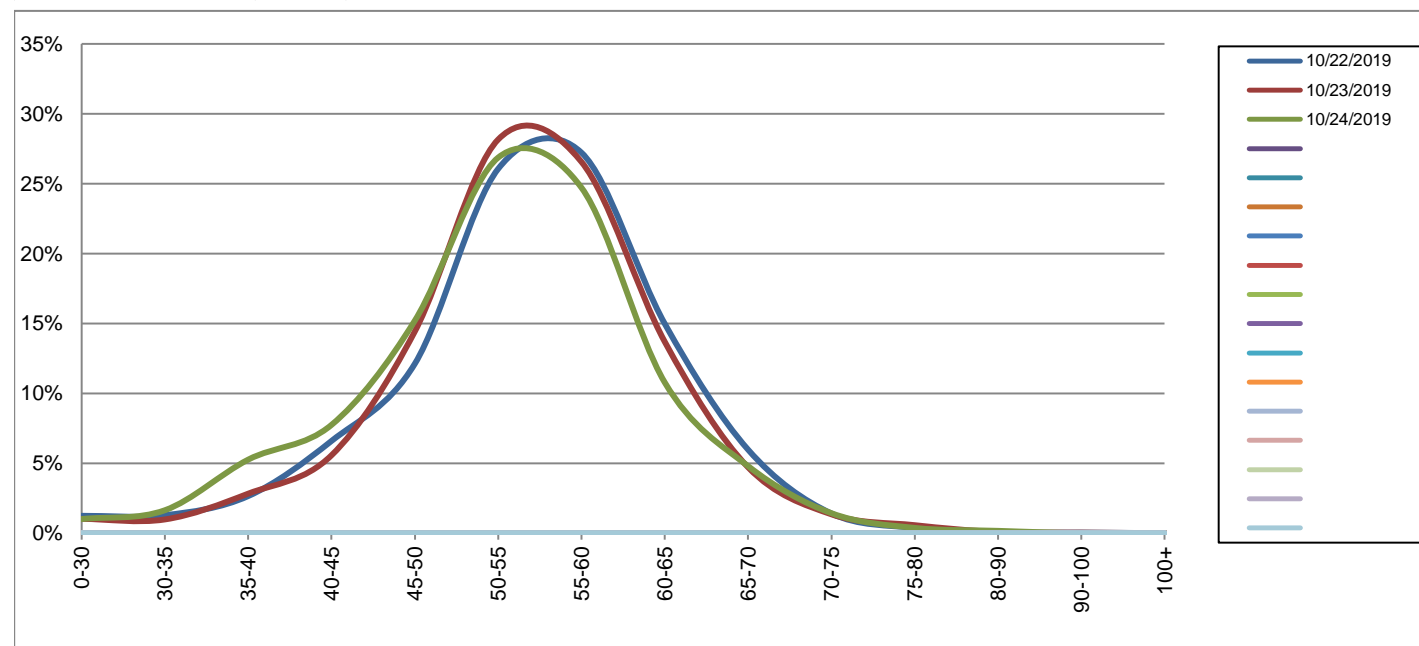
Eastbound

October 22, 2019 to October 24, 2019

Daily Speed Bin Percentages															Daily Speed Bin Volumes														Total	Avg.
Bin #	1	2	3	4	5	6	7	8	9	10	11	12	13	14	1	2	3	4	5	6	7	8	9	10	11	12	13	14	Volume	Speed
Bin Speeds	0-30	30-35	35-40	40-45	45-50	50-55	55-60	60-65	65-70	70-75	75-80	80-90	90-100	100+	0-30	30-35	35-40	40-45	45-50	50-55	55-60	60-65	65-70	70-75	75-80	80-90	90-100	100+		
10/22/2019	1.2%	1.3%	2.7%	6.6%	12.1%	26.1%	27.2%	15.0%	6.0%	1.4%	0.4%	0.0%	0.0%	0.0%	30	31	64	159	292	628	656	361	144	34	9	1	1	0	2410	54
10/23/2019	1.0%	1.0%	2.8%	5.6%	14.4%	28.2%	26.6%	13.7%	4.7%	1.4%	0.6%	0.1%	0.0%	0.0%	25	24	69	136	352	687	648	334	115	33	14	2	1	0	2440	54
10/24/2019	1.0%	1.6%	5.3%	7.7%	15.2%	26.9%	24.7%	10.8%	4.8%	1.4%	0.4%	0.2%	0.0%	0.0%	24	39	125	184	361	638	587	256	114	34	9	4	0	0	2375	53
<b>Total</b>	1.1%	1.3%	3.6%	6.6%	13.9%	27.0%	26.2%	13.2%	5.2%	1.4%	0.4%	0.1%	0.0%	0.0%	79	94	258	479	1005	1953	1891	951	373	101	32	7	2	0	7225	54

**Speed Data Summary**

Bin #	1	2	3	4	5	6	7	8	9	10	11	12	13	14	Total
Bin Speeds	0-30	30-35	35-40	40-45	45-50	50-55	55-60	60-65	65-70	70-75	75-80	80-90	90-100	100+	
Survey Total	79	94	258	479	1005	1953	1891	951	373	101	32	7	2	0	7225
% Total	1.1%	1.3%	3.6%	6.6%	13.9%	27.0%	26.2%	13.2%	5.2%	1.4%	0.4%	0.1%	0.0%	0.0%	100%
Accumulated %	1.1%	2.4%	6.0%	12.6%	26.5%	53.5%	79.7%	92.9%	98.0%	99.4%	99.9%	100.0%	100.0%	100%	
Inverse Accum. %	98.9%	97.6%	94.0%	87.4%	73.5%	46.5%	20.3%	7.1%	2.0%	0.6%	0.1%	0.0%	0.0%	0.0%	
Average Speed	54 KM/H														



Site notes:

Mann Ave between Glanford Rd and Vanalman Ave

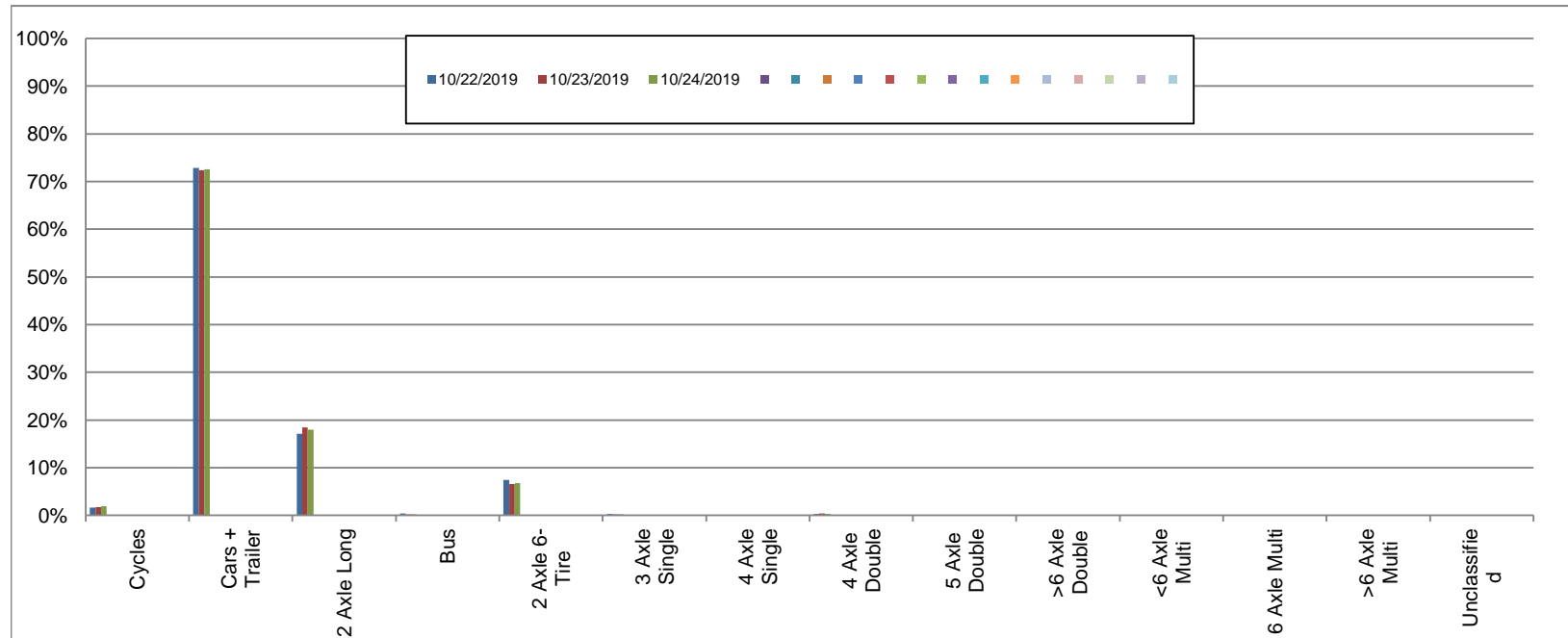
Westbound

October 22, 2019 to October 24, 2019

Daily Class Bin Percentages															Daily Class Bin Volumes											Total Volume				
Bin #	1	2	3	4	5	6	7	8	9	10	11	12	13	14	1	2	3	4	5	6	7	8	9	10	11		12	13	14	
Bin Class	Cycles	Cars + Trailer	2 Axle Long	Bus	2 Axle 6-Tire	3 Axle Single	4 Axle Single	4 Axle Double	5 Axle Double	>6 Axle Double	<6 Axle Multi	6 Axle Multi	>6 Axle Multi	Unclassified	Cycles	Cars + Trailer	2 Axle Long	Bus	2 Axle 6-Tire	3 Axle Single	4 Axle Single	4 Axle Double	5 Axle Double	>6 Axle Double	<6 Axle Multi	6 Axle Multi	>6 Axle Multi	Unclassified		
10/22/2019	1.6%	72.8%	17.1%	0.4%	7.5%	0.3%	0.0%	0.3%	0.0%	0.0%	0.0%	0.0%	0.0%	0.0%	41	1825	428	9	187	7	0	8	0	0	0	0	0	0	1	2506
10/23/2019	1.8%	72.4%	18.4%	0.2%	6.5%	0.2%	0.0%	0.4%	0.0%	0.0%	0.0%	0.0%	0.0%	0.1%	43	1771	451	5	160	4	0	10	0	0	0	0	0	0	3	2447
10/24/2019	1.9%	72.6%	18.0%	0.2%	6.8%	0.2%	0.0%	0.3%	0.0%	0.0%	0.0%	0.0%	0.0%	0.1%	45	1725	427	4	161	4	0	7	0	0	0	0	0	0	3	2376
<b>Total</b>	<b>1.8%</b>	<b>72.6%</b>	<b>17.8%</b>	<b>0.2%</b>	<b>6.9%</b>	<b>0.2%</b>	<b>0.0%</b>	<b>0.3%</b>	<b>0.0%</b>	<b>0.0%</b>	<b>0.0%</b>	<b>0.0%</b>	<b>0.0%</b>	<b>0.1%</b>	<b>129</b>	<b>5321</b>	<b>1306</b>	<b>18</b>	<b>508</b>	<b>15</b>	<b>0</b>	<b>25</b>	<b>0</b>	<b>0</b>	<b>0</b>	<b>0</b>	<b>0</b>	<b>7</b>	<b>7329</b>	

Class Data Summary

Bin #	1	2	3	4	5	6	7	8	9	10	11	12	13	14	Total Volume
Bin Class	Cycles	Cars + Trailer	2 Axle Long	Bus	2 Axle 6-Tire	3 Axle Single	4 Axle Single	4 Axle Double	5 Axle Double	>6 Axle Double	<6 Axle Multi	6 Axle Multi	>6 Axle Multi	Unclassified	Total Volume
<b>Survey Total</b>	129	5321	1306	18	508	15	0	25	0	0	0	0	0	7	7329
<b>% Total</b>	1.8%	72.6%	17.8%	0.2%	6.9%	0.2%	0.0%	0.3%	0.0%	0.0%	0.0%	0.0%	0.0%	0.1%	100%
<b>Accumulated %</b>	1.8%	74.4%	92.2%	92.4%	99.4%	99.6%	99.6%	99.9%	99.9%	99.9%	99.9%	99.9%	99.9%	100.0%	
<b>Inv. Accum. %</b>	98.2%	25.6%	7.8%	7.6%	0.6%	0.4%	0.4%	0.1%	0.1%	0.1%	0.1%	0.1%	0.1%	0.0%	



Classification Descriptions

Bin #	Bin Description
1	Motorcycles
2	Passenger cars, including those with recreational trailers
3	2-axle pick-ups, vans, and RVs, including those with recreational trailers
4	Buses
5	2-axle, 6-tire single units
6	3-axle single units
7	4-axle single units
8	3-axle or 4-axle double unit
9	5-axle double unit
10	6-, 7-, or 8-axle double unit
11	5-axle multiple unit
12	6-axle multiple unit
13	7-or-more-axle multiple unit
14	Vehicles that could not be classified

Site notes:



**Mann Ave between Glanford Rd and Vanalman Ave**

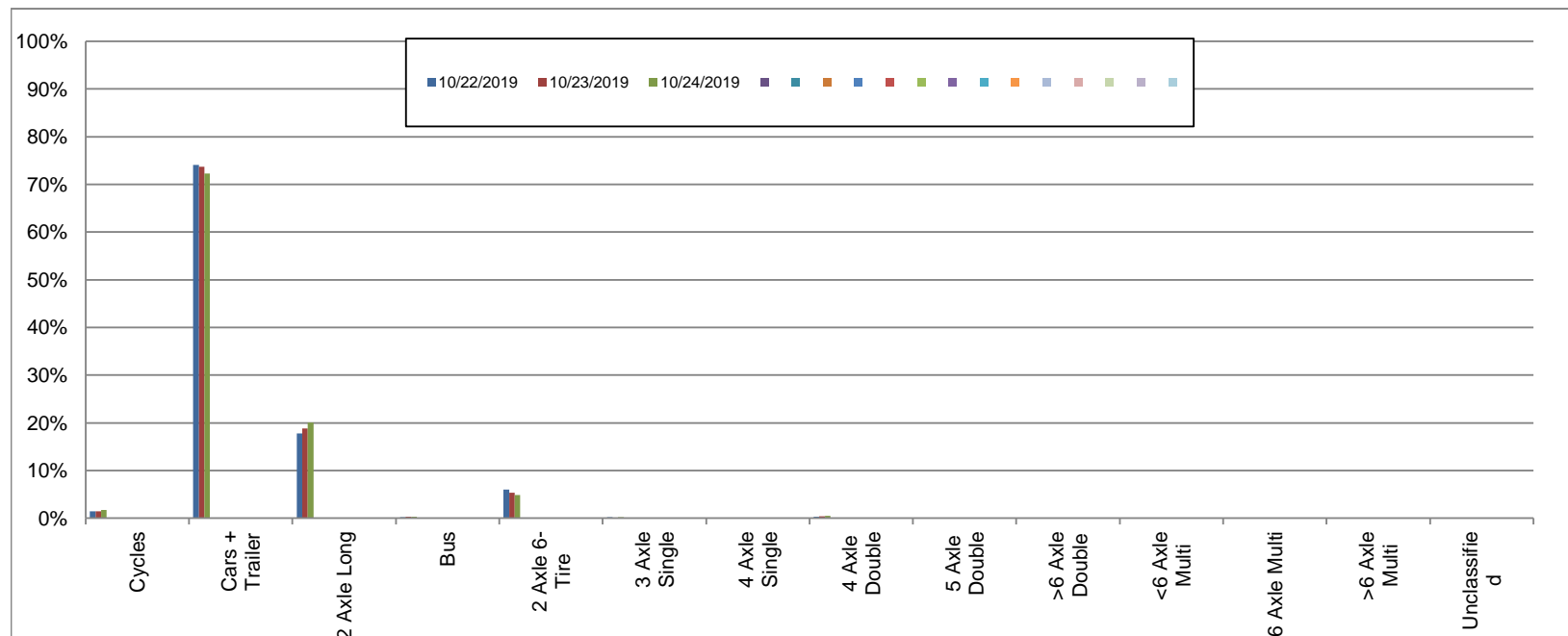
Eastbound

October 22, 2019 to October 24, 2019

Daily Class Bin Percentages															Daily Class Bin Volumes											Total Volume			
Bin #	1	2	3	4	5	6	7	8	9	10	11	12	13	14	1	2	3	4	5	6	7	8	9	10	11		12	13	14
Bin Class	Cycles	Cars + Trailer	2 Axle Long	Bus	2 Axle 6-Tire	3 Axle Single	4 Axle Single	4 Axle Double	5 Axle Double	>6 Axle Double	<6 Axle Multi	6 Axle Multi	>6 Axle Multi	Unclassified	Cycles	Cars + Trailer	2 Axle Long	Bus	2 Axle 6-Tire	3 Axle Single	4 Axle Single	4 Axle Double	5 Axle Double	>6 Axle Double	<6 Axle Multi	6 Axle Multi	>6 Axle Multi	Unclassified	
10/22/2019	1.4%	74.1%	17.8%	0.2%	6.0%	0.2%	0.0%	0.3%	0.0%	0.0%	0.0%	0.0%	0.0%	0.0%	34	1786	429	4	145	5	0	7	0	0	0	0	0	0	2410
10/23/2019	1.5%	73.7%	18.9%	0.3%	5.3%	0.0%	0.0%	0.4%	0.0%	0.0%	0.0%	0.0%	0.0%	0.0%	36	1798	460	7	129	0	0	10	0	0	0	0	0	0	2440
10/24/2019	1.7%	72.3%	20.0%	0.3%	4.8%	0.2%	0.0%	0.5%	0.0%	0.0%	0.0%	0.0%	0.0%	0.1%	40	1717	476	8	115	5	0	12	0	0	0	0	0	2	2375
<b>Total</b>	<b>1.5%</b>	<b>73.4%</b>	<b>18.9%</b>	<b>0.3%</b>	<b>5.4%</b>	<b>0.1%</b>	<b>0.0%</b>	<b>0.4%</b>	<b>0.0%</b>	<b>0.0%</b>	<b>0.0%</b>	<b>0.0%</b>	<b>0.0%</b>	<b>0.0%</b>	<b>110</b>	<b>5301</b>	<b>1365</b>	<b>19</b>	<b>389</b>	<b>10</b>	<b>0</b>	<b>29</b>	<b>0</b>	<b>0</b>	<b>0</b>	<b>0</b>	<b>0</b>	<b>2</b>	<b>7225</b>

**Class Data Summary**

Bin #	1	2	3	4	5	6	7	8	9	10	11	12	13	14	Total Volume
Bin Class	Cycles	Cars + Trailer	2 Axle Long	Bus	2 Axle 6-Tire	3 Axle Single	4 Axle Single	4 Axle Double	5 Axle Double	>6 Axle Double	<6 Axle Multi	6 Axle Multi	>6 Axle Multi	Unclassified	Total Volume
<b>Survey Total</b>	110	5301	1365	19	389	10	0	29	0	0	0	0	0	2	7225
<b>% Total</b>	1.5%	73.4%	18.9%	0.3%	5.4%	0.1%	0.0%	0.4%	0.0%	0.0%	0.0%	0.0%	0.0%	0.0%	100%
<b>Accumulated %</b>	1.5%	74.9%	93.8%	94.0%	99.4%	99.6%	99.6%	100.0%	100.0%	100.0%	100.0%	100.0%	100.0%	100.0%	
<b>Inv. Accum. %</b>	98.5%	25.1%	6.2%	6.0%	0.6%	0.4%	0.4%	0.0%	0.0%	0.0%	0.0%	0.0%	0.0%	0.0%	



**Classification Descriptions**

Bin #	Bin Description
1	Motorcycles
2	Passenger cars, including those with recreational trailers
3	2-axle pick-ups, vans, and RVs, including those with recreational trailers
4	Buses
5	2-axle, 6-tire single units
6	3-axle single units
7	4-axle single units
8	3-axle or 4-axle double unit
9	5-axle double unit
10	6-, 7-, or 8-axle double unit
11	5-axle multiple unit
12	6-axle multiple unit
13	7-or-more-axle multiple unit
14	Vehicles that could not be classified

Site notes: